

Make sure your patient is treated
with the right antibiotic

FLEXICULT[®] VET



**Flexicult[®] Vet is an in-office test for
diagnosis of urinary tract infections
in cats and dogs**

SSI Diagnostica A/S
Herredsvejen 2
3400 Hillerød
Denmark
T +45 4829 9100

ssidiagnostica.com



FLEXICULT[®] VET

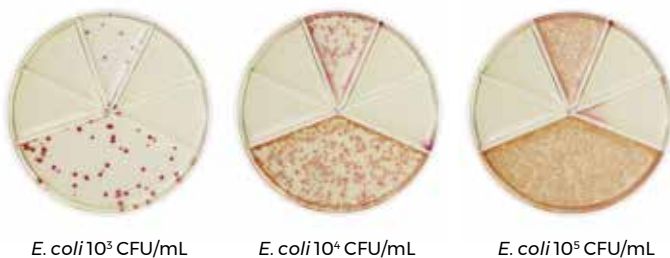
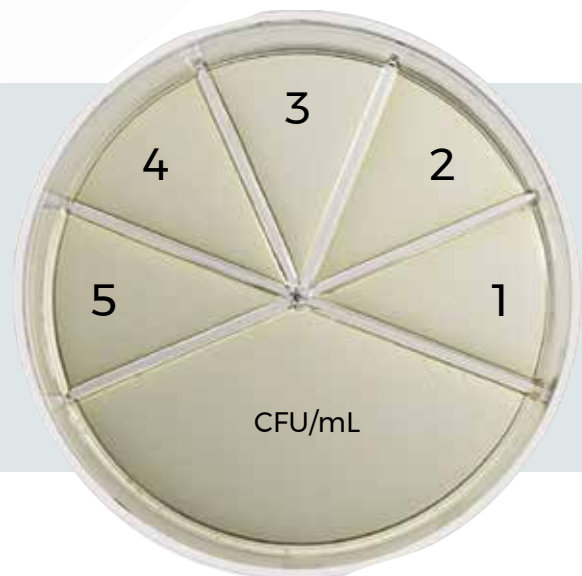
Flexicult[®] Vet is a 24 hour culture test designed for diagnosing urinary tract infections (UTI) in dogs and cats by:

- identification and quantitative enumeration of bacteria in the urine
- predicts the susceptibility of the bacteria against 5 antibiotics

The golden standard for diagnosis of UTI is urine culturing. Beside this it is recommended that antibiotic treatment is based on the susceptibility of the bacteria.

FLEXICULT[®] VET CONTAINS THE FOLLOWING ANTIBIOTICS:

- 1 = Ampicillin (predictor for amoxicillin)
- 2 = Amoxicillin/clavulanate
- 3 = Oxacillin (indicator for methicillin resistant *Staph. pseudintermedius* (MRSP))
- 4 = Enrofloxacin
- 5 = Trimethoprim/sulfamethoxazole (predictor of potentiated sulfonamides with trimethoprim)



E. coli 10³ CFU/mL

E. coli 10⁴ CFU/mL

E. coli 10⁵ CFU/mL

Reading of Flexicult[®] Vet: After incubation overnight (18-24 hours) the agar plate is examined for growth of bacteria.

Counting compartment: The more bacteria in the urine sample, the more bacteria will grow in the counting compartment. A comparison of the colony density in the counting compartment with the examples below with *E. coli* gives an indication of the number of bacteria in the urine sample (CFU/mL urine).

Sample collection: The urine sample should preferably be collected as sterile as possible by cystocentesis. By this technique normal microflora from the animals urinary tract are avoided. If cystocentesis is not possible catheterization or collection of urine from a midstream void can be used.

The fresh urine sample should be applied on Flexicult[®] Vet within 30 min. after collection.

