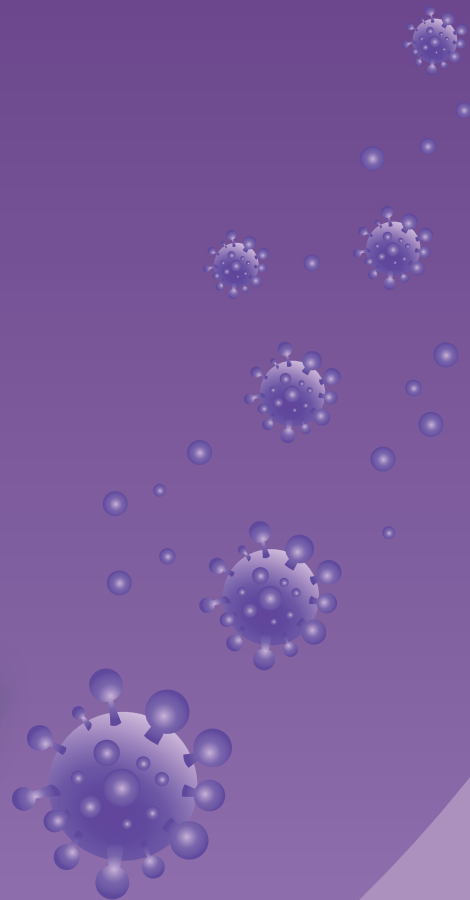
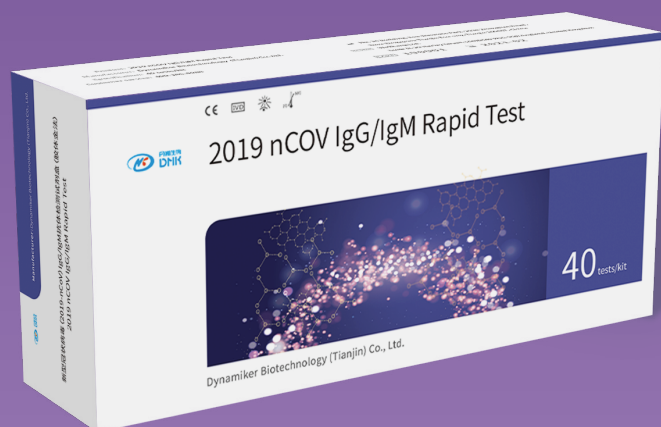




丹娜生物  
DNK

Catalogue No. DNK-1419-1

Co-developed with Institute of Pathogen Biology,  
Chinese Academy of Medical Sciences



## 2019-nCoV IgG/IgM Rapid Test (LFA)

- **Sample:**

WB/S/P

- **Combo:**

IgG/IgM two in one

- **Rapid:**

TAT: 10mins

- **Clinical validation:**

Accuracy: >92%

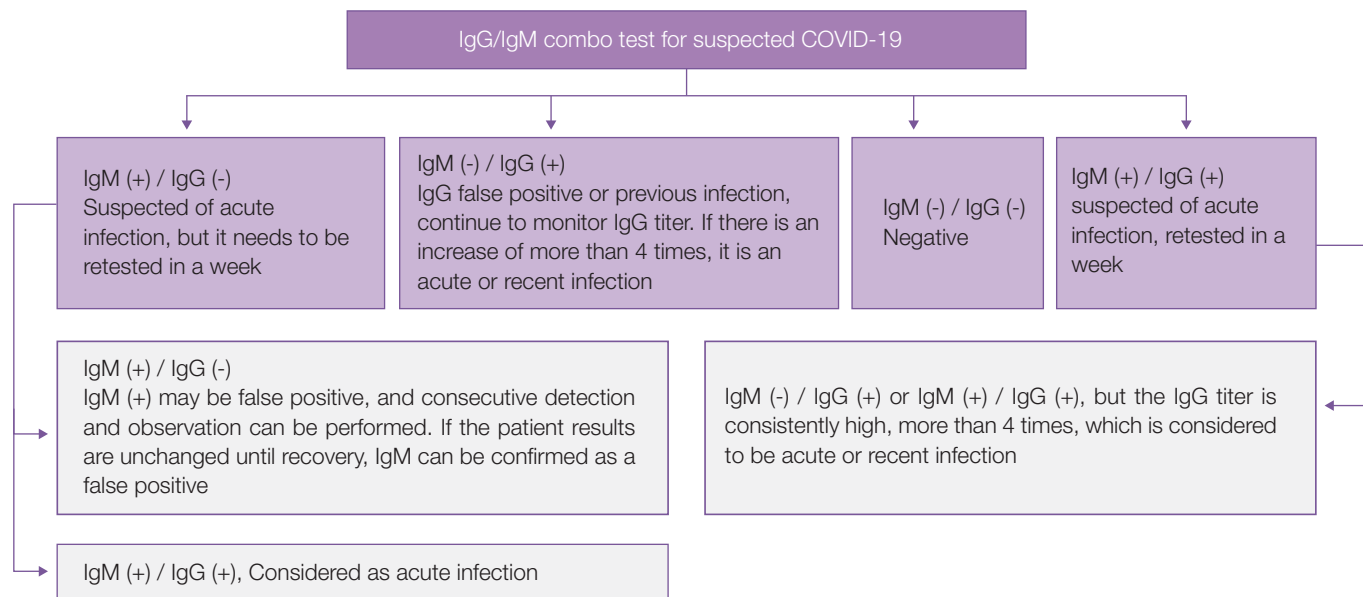
## 1 Order information

Cat. No.	Product	Format	Time to report	Sample	Pack
DNK-1419-1	2019-nCoV IgG/IgM Rapid Test	Cassette	10mins	Whole blood/ Serum/ Plasma	40 TESTS/KIT

## 2 Clinical value of IgG/IgM detection for COVID-19

According to the "Diagnostic and treatment protocol of COVID-19 (7th Version)", the 2019-nCoV IgG/IgM antibody test is one of the proven diagnostic criteria, to assist the diagnostic of COVID-19. This is a big improvement and supplement of PCR assay.

Normally IgM appears at early stage of infection and IgG shows later with an increased titer and could exist in blood for a long time. Regarding how to combine 2019-nCoV IgG/IgM test, the National Center for Clinical Laboratories provides authentic interpretation. See Table 1.



## 3 Easy operation (Fingertip blood available)

