

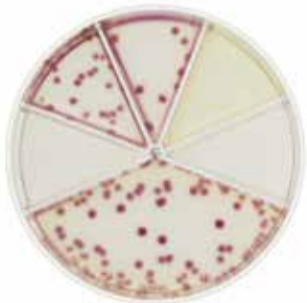
FLEXICULT®

URINKIT

SSI Diagnostica A/S
 Herredsvejen 2
 3400 Hillerød
 Denmark
 T +45 4829 9100

ssidiagnostica.com

E. COLI

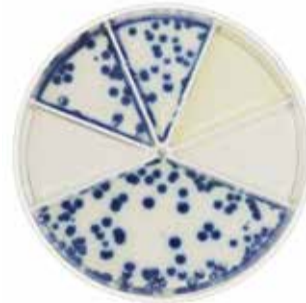


10³ cfu/mL



10⁵ cfu/mL

KLEBSIELLA SP.

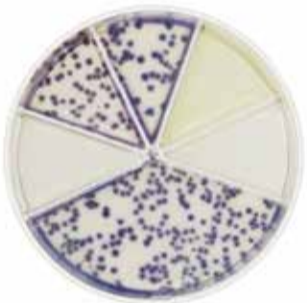


10³ cfu/mL



10⁵ cfu/mL

ENTEROBACTER SP.



10³ cfu/mL



10⁵ cfu/mL

PROTEUS SP.

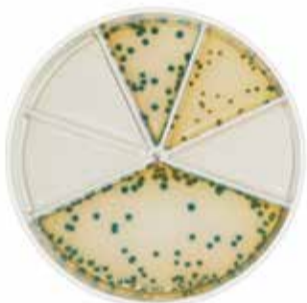


10³ cfu/mL



10⁵ cfu/mL

PROTEUS VULGARIS



10³ cfu/mL



10⁵ cfu/mL

PSEUDOMONAS AERUGINOSA



10³ cfu/mL



10⁵ cfu/mL

ENTEROCOCCUS FAECALIS



10³ cfu/mL



10⁵ cfu/mL

ENTEROCOCCUS FAECIUM



10³ cfu/mL



10⁵ cfu/mL

STAPHYLOCOCCUS SAPROPHYTICUS



10³ cfu/mL



10⁵ cfu/mL

CANDIDA SP.



10⁵ cfu/mL

AFLÆSNING AF RESISTENS

I tabellen herunder vises hvilke bakterier, der har en naturlig resistens over for de fem antibiotika, fx er *Klebsiella* sp. altid resistent overfor ampicillin, enterokokker resistente overfor trimethoprim, sulfamethizol, mecillinam, *Pseudomonas* sp. og *Candida* sp. er altid resistente overfor alle fem antibiotika i Flexicult® pladen.

Bakterie/ Svampe	Resistent = R				
	Trime-thoprim	Sulfame-methizol	Ampicillin	Nitrofu-rantoin	Mecilli-nam
<i>E. coli</i>
<i>Klebsiella</i> sp.	.	.	R	.	.
<i>Enterobacter</i> sp.	.	.	R	.	.
<i>Proteus</i> sp.	.	.	.	R	.
<i>Proteus vulgaris</i>	.	.	R	R	.
<i>Pseudomonas aeruginosa</i>	R	R	R	R	R
<i>Enterococcus faecalis</i>	R	R	.	.	R
<i>Enterococcus faecium</i>	R	R	.	.	R
<i>Staphylococcus saprophyticus</i>
<i>Candida</i> sp.	R	R	R	R	R

R kan *in vitro* se ud som følsom, men klinisk er der ingen effekt og skal svares R